

THE

RIVER

AUTUMN 2015

LAMBETH & SOUTHWARK

DRAWING COMPETITION

The coveted £8,000
prize from Jerwood

LOOKING EAST

Turning to Rotherhithe
and Surrey Quays

WINE CLUB

First taste of
Reader Deals from
a local merchant

EDUCATION

Open days and a look inside
the best local schools

FOOD & DRINK • STYLE • CULTURE • FOR THE SOUL • PROPERTY

make IT flexible

Small team, highly responsive service at affordable hourly rates or fixed prices

Bespoke databases and software development

We also provide

- Websites
- SEO
- Social Media
- CRMs
- Warehouse and other business management systems



For a free consultation
call 020 7403 8105
or visit www.onclouds.com

onclouds



EMPANADA PARTY



CHIMICHURRI SAUCE



11OZ. ARGENTINE RIB-EYE



FRIED SWEET POTATOES



NOW OPEN FOR LUNCH

SERVING TRADITIONAL ARGENTINIAN DISHES AND DAILY SPECIALS



NEW GOURMET BURGER



PATAGONIAN LAMB



DAILY SPECIALS



RESERVE A TABLE
020 7234 0676

OPEN FROM 12.00

52 TANNER STREET
(CORNER WITH TOWER BRIDGE ROAD)
LONDON, SE1 3PH

WWW.CONSTANCIA.CO.UK

f CONSTANCIA GRILL @CONSTANCIAGRILL

THE RIVER

LAMBETH & SOUTHWARK



Shipbuilding at Surrey Quays

EDITORS WORDS

Dear Readers

This September marks our third anniversary and this time round we have been delighted to work with new people in our community to create fresh content and features not seen before.

In this issue we have a marvellous 'Wine Club' in collaboration with local merchants Lant Street Wines, who are offering special deals and discounts on award-winning reds and whites. We also have our first full Education feature, showcasing the very best of local education, which uncovers some inspirational stories, teachers and pupils that are helping to shape an even brighter future for London's riverside residents.


We invite you to visit the Jerwood Drawing exhibition and see some great Rep. theatre just north of the river. Two of our team went to see Three Days in the Country at the National and highly recommend that you do too.

Of course, come rain or shine, the only place to be on 19th September is the Bermondsey Street Festival - so hope to see you there!

Yours
A Webb

Angela Webb,
Editor



Follow us on twitter @rivermagazine and  Like us on facebook

www.facebook.com/TheRiverMagazine

All of our content is now online at www.therivermagazine.co.uk



WHEN YOU HAVE FINISHED WITH
THIS MAGAZINE PLEASE RECYCLE IT

CONTACT US

Editor

A Webb
awebb@therivermagazine.co.uk

Sub Editor

Owen Rice

Contributors

Joe Campbell
Ruth Parr
Owen Rice
George Swinton

Designers

Alison Cutler
Milana Veselinovic

Publisher

Chris Richmond

Assistant Publisher

Joe Campbell

Commercial Sales

Lee Hayes
commercial@therivermagazine.co.uk

FREEPHONE

0800 021 1484

THE RIVER

The RIVER Magazine is published by River Publishing House Limited.

Company number: 8307961.

River Publishing House cannot accept responsibility for unsolicited articles and images. We reserve the right to publish and edit any letters and emails. The material in The RIVER Magazine is subject to copyright. All rights reserved.

The paper in this magazine originates from timber that is sourced from sustainable forests, responsibly managed to strict environmental, social and economic standards. The manufacturing mills have both FSC & PEFC certification and also ISO9001 and ISO14001 accreditation.

VALENTINA

Fine foods since 1991

LOOKING FOR A VENUE FOR THIS YEAR'S **CHRISTMAS PARTY?**



**BOOK WITH VALENTINA FINE FOODS BEFORE NOVEMBER 15TH, 2015
AND GET A COMPLIMENTARY GLASS OF PROSECCO UPON ARRIVAL PER PERSON**

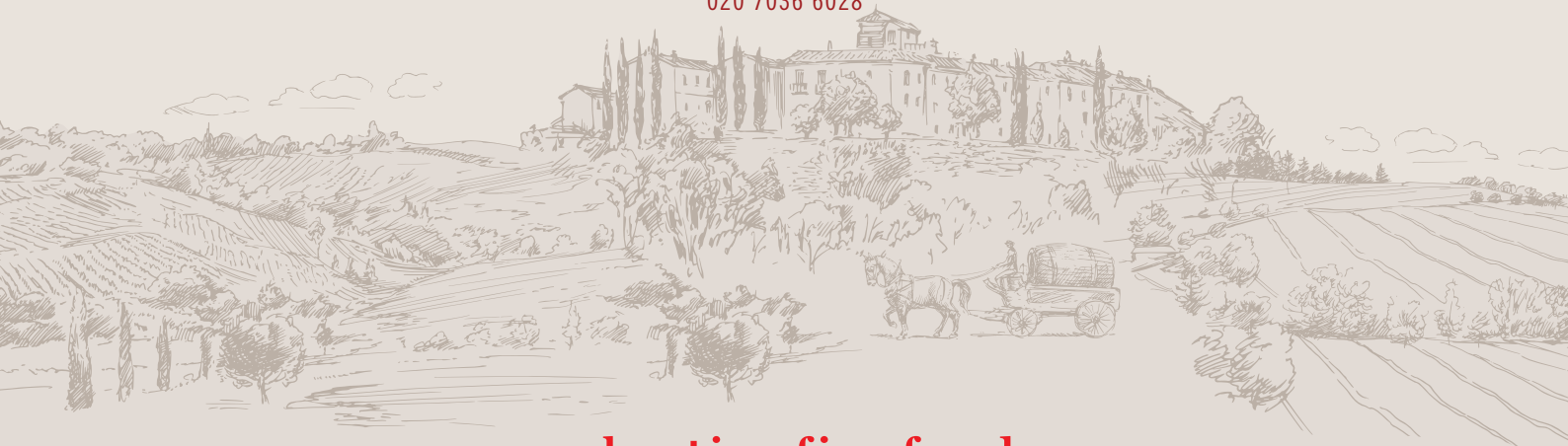
VISIT WEBSITE FOR FULL TERMS AND CONDITIONS

PRIVATE DINING AREA AVAILABLE AT TOWER BRIDGE BRANCH

31 SHAD THAMES LONDON SE1 2YR

towerbridge@valentinafinefoods.com

020 7036 6028



www.valentinafinefoods.com



In The River AUTUMN 2015

20

FOOD & DRINK

- 09 Wines with Provenance
- 12 Biscuit Town
- 13 Turkish Delights

STYLE

- 14 Shipbuilding at Surrey Quays

CULTURE

- 16 Ever HopeFull Rep.
- 17 Entertainments Listings
- 20 Bermondsey Street Festival 2015
- 22 Three Days in the Country
- 24 Cover Story: Pencils Down

EDUCATION

- 25 Education for Everyone
- 36 Open Day Listings

PROPERTY

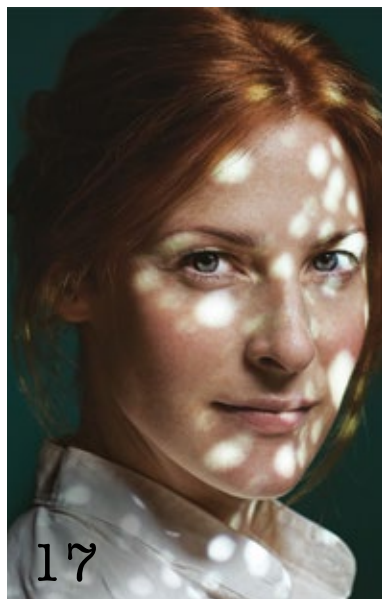
- 38 What's Your Property Worth?
- 39 The Rise of Rotherhithe



09



24



17



25

Kilikya's

Turkish Deli & Food Hall

Ranked in the top 5% of London restaurants by Trip Advisor!



St. Katharine Docks E1W 1AT

020 7488 0813

www.kilikyas.com

breakfast meetings and afternoon teas



relax with evening cocktails



10 London Bridge Street
London Bridge Quarter
SE1 9SG

020 7855 2200

Just steps from The Shard

LONDON
BRIDGE
HOTEL

A photograph of a man with glasses and a red jacket, holding a wine glass, standing in a wine cellar. The shelves behind him are filled with wine bottles, and signs for 'Minervois' and 'Languedoc' are visible.

WINES

with provenance

Selling to both trade and public, local wine specialists have re-opened their doors as the 'Lant Street Wine Company' with a fabulous RIVER Reader 'Wine Club'

by Owen Rice

just around the corner from Borough tube station on Lant Street is an old, converted cork factory that from 1986 housed Waterloo Wine Co (established by Paul Tutton of Tutton's in Covent Garden) and has recently evolved into the Lant Street Wine Company. An independent wine merchant, Lant Street Wine do the simple things well; finding and importing interesting wines from small, quality producers and selling them at reasonable prices.

It is said that Ben was 'almost born in a bottle' having explored

“Ben knows every aspect of a wine merchant's world from vineyard to consumer

the cellars and shelves of Waterloo Wine since he was 6 years old. Ben's father, David, had worked from the early days with Paul Tutton and their selection and supply of world wines for over thirty years drew praises from many including Oz Clarke, for being 'full of quirky, unexpected bottles.' Ben, having grown up in the middle of all of this, knows every aspect of the wine merchant's world from vineyard to consumer, and has now stepped boldly into management.

Another of the next generation of merchants at Lant Street is Rudi, Assistant Manager and a comparatively late starter originally more interested in grains than grapes (with a particular fondness for Japanese whiskey). Rudi has been exploring the world of wine for 5 years and is currently working his way through his Wine & Spirit Education Trust courses.

Their long-standing relationships with family-run wine producers gives the team at Lant Street Wine unprecedented insights into how

the estates and vines have evolved and the passion of the wine-makers themselves. 'When customers pop into the shop, nine times out of ten we will have tried the bottle they're looking at and can offer advice on its style and flavours,' explained Rudi.

Although steeped in a great wine provenance, the team at Lant Street have a refreshing, relaxed air of casual enjoyment of the whole trade, wonderfully embodied in Ben. When asked what his personal favourites were he shrugged, 'It varies, depending on the time of day and occasion of course, but I will generally come back to a dry, crisp Loire Valley white. A classic English fry-up accompanied by Champagne is also not out of the question!'

LANT STREET WINE COMPANY

59-61 Lant Street
SE1 1QL
t: 020 7357 7788
e: sales@lantstreetwine.com

THE
RIVER
wine club
 from Lant Street Wines

We are delighted to bring you the first of four Wine Club 'Reader Offers' in conjunction with local wine merchants Lant Street Wines.

<i>Autumn recommendations</i>			
<i>Waipara West Pinot Noir 2013</i>	£25.00	<i>Pascal Bouchard Chablis 2014</i>	£16.32
<i>Chateau Fayet 2011</i>	£11.18	<i>Cedric Bardin Sancerre 2014</i>	£14.98
<i>Ferrandiere Merlot 2014</i>	£7.75	<i>Cassagnoles Colombiane 2013</i>	£7.10
<i>Waipara West Sauvignon Blanc 2013</i>	£12.29	<i>L' Ancienne Cure Bergerac Rose 2013</i>	£11.45

tasting notes



FERRANDIERE MERLOT 2014

Made from 25 year old vines. The wine is made by undergoing cold maceration for 5 days then temperature controlled fermentation for 10 days in contact with the skins. Matured in tanks for eight months. Aromas of red fruit and cherries, with refined tannins and soft mouth-feel on the palate.



PASCAL BOUCHARD CHABLIS 2014

100% Chardonnay. Fresh and mineral, a classic French wine for matching fish, seafood and mild cheeses. Unoaked, so the emphasis is on freshness, fruit and minerality. Full and rich in style, with hints of pear, green apple and citrus on the palate.

CEDRICK BARDIN SANCERRE 2014

Made from Sauvignon Blanc vines averaging 20 years old, grown on a plot of local flint soils famous for their minerality and finesse. This is good, typical Sancerre - citrus fruit and gooseberry aromas on the nose, with mineral and floral notes coming through. Full and silky mouth-feel with a light fruit sweetness. White blossom and citrus flavours, with stony minerality and a touch of exotic fruit. Dry, crisp, with fresh zingy acidity and a lean finish. Good with fish and goats cheese.





CHATEAU TAYET 2011

The blend for Château Tayet is 60% Merlot and 40% Cabernet Sauvignon. After vinification in the winery, maturation takes place for 12 months or so in stainless steel or concrete tanks. The wine is then bottled at the château. Ruby red, with a nose and palate of red fruit flavours. Good depth and length for the price. Should be drunk within 3-5 years, to get the best from the fruit.

WAIPARA WEST SAUVIGNON BLANC 2013

Punchy passionfruit, nettle, gooseberry and box tree sit on top of richer tropical & citrus fruit notes. The riper fruit characters are from the more exposed parts of the vineyard where the grapes develop fuller, richer flavour. This sort of fruit absolutely loves being fermented in barrel, mainly older, and left on lees for winter adding nuance of yoghurt, linseed and flint. The palate is dry, the mid palate is impressive with a lovely surge of flavour filling the mouth then leading to a long clean, satisfying finish. Silver Medal Winner of the International Wine Challenge Trophy 2015.



WAIPARA WEST PINOT NOIR 2013



A satisfyingly deep ruby/crimson with purple hues at the rim. Aromatically it is multi-layered with a predominantly “wild” fruit character, think wild strawberries combined with some forest floor complexity. The oak plays a supporting role adding notes of smoke, liquorice & spice. Red & dark cherry, sweet summer plums and cassis on the palate. Solid tannins are buoyed by fresh, juicy acidity which give the wine both drive and texture.



Finish is long and dry. Winner of the International Wine Challenge Trophy for ‘Best New Zealand Pinot Noir in 2015’.

COTES DE GASCOGNE COLOMBLANC 2013



A blend of Colombard, Ugni Blanc, and Sauvignon Blanc grape varieties. Blends are created by Gilles Baumann, selecting the various vats by tasting to determine which combination would create the best balance according to the characteristics of each grape variety. Typical fresh Gascogne style, no oak and lots of emphasis on fresh fruit. Dry, with apple-y fruit and good acidity and finish.



BERGERAC ROSE 2013

Light red/pink in appearance with Raspberry nose with a hint of strawberry and blackcurrant. The palate is fresh, generous and provided with a long, crisp finish.

**12 BOTTLES (MIXED CASE)
- 15% OFF & FREE DELIVERY
WITHIN 10 MILES OF SE1**

- x2 Ferrandiere Merlot
- x1 Cedrick Bardin Sancerre
- x2 Waipara West Pinot Noir 2013
- x2 Waipara West Sauvignon Blanc 2013
- x2 Chateau Tayet Bordeaux
- x1 Cotes de Gascogne Colomb blanc
- x1 L'Ancienne Cure Bergerac Rose
- x1 Pascal Bouchard Chablis

**Total price £137.95
(normally £162.29)**

020 7357 7788

Or visit Lant Street Wines at 59-61 Lant Street SE1 1QN (near Borough tube station) and mention The RIVER to receive 10% off your first order.

BISCUIT town

Sounds like a dream... Where is this place?

by Ruth Parr



Mediterranean Food
Fresh and Tasty
Great Atmosphere

Independently selected
Beers and Wines -
Including
'Camden Hells Lager' and
'Meantime Pale Ale'



On the Southbank at Gabriels Wharf
(Near OXO Tower and London Eye)

Opening Times:
Monday – Saturday
12pm-11pm

Sunday
12pm-10.30pm

020 7928 6243

www.studio6restaurant.com

Studio 6

Like us on Facebook!

Could it be a real place or just something along the lines of 'The Big Rock Candy Mountain'; a fantasy destination full of all the things you love best, where hens lay soft boiled eggs and there are natural springs of lemonade?

During a recent episode of The Great British Bake Off it was said that Bermondsey had once been known as 'Biscuit Town', and amazingly – it's true!

James Peek and George Hender Frean founded Peek Frean at Dockhead, just off Jamaica Road in 1857. Many of the famous lines we still know today were invented by them: Garibaldi in 1861, Marie in 1875, Chocolate Table (the first chocolate-coated biscuit) in 1899 and the classic Bourbon in 1910.

When their Dockhead factory burned down in 1873, the enormous production machine moved to Drummond Road. It was at this point that Bermondsey became known as 'Biscuit Town'.

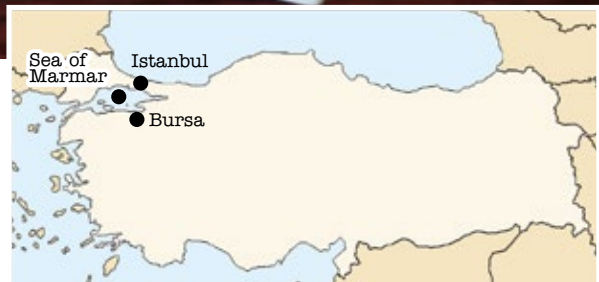
By the 1940s Peek Frean was a powerhouse, employing over 4,000 people directly. Located so close to Surrey Docks and the railway line, the factory was perfectly placed to import the best ingredients from all over the colonies and equally well-placed to export the biscuits back again.

Perhaps so long ago the story drifted over to hobo travellers in America, of a town that just made fabulous foods and inspired the Big Rock Candy legend, 'a land of milk and honey, where you can stay for many a day and you won't need any money'.



TURKISH delights

#1: Iskender Kebab



Getting to know Turkey through its food, drink and hospitality at Kilikya's in St Katharine Docks

by Owen Rice

The Iskender Kebab (kebab) is one of Turkey's most famous dishes and originates from Bursa in the northwestern Marmara region, just 50 miles south of Istanbul and close to the Sea of Marmara. According to culinary folklore, "Chef Alexander" (Mehmetoglu Iskender Efendi) created the first 'Iskender Kebab' in 1867. Selecting lamb raised on the thyme-covered slopes of Mount Uludag, he roasted the meat as a self-basting doner kebab on a vertical grill and cut off thin slices as it cooked, spreading the meat on top of a bed of diced bread. The dish was then topped with savory tomato sauce and browned butter, and completed with a generous serving of yogurt on the

side and a sprinkling of parsley.

This delicate combination became a national treasure and an enormously popular export all over the world with each new generation of chefs, in each new place, creating their own special version.

“while away the hours chatting, eating and drinking tea or traditional Kahvesi coffee

Kilikya's, situated at the impressive waterside of St Katharine Docks in EC1, have three versions on their menu; the classic lamb, a chicken and a mixed version. The mixed 'kebab' (sampled for the purpose of this article) was a show-stopping

blend of floral chicken, deeply flavoured lamb and rich tomato and herb sauce, presented in a grand, authentic Turkish steel bowl.

It is little wonder that Turkish people in London flock there to while away the hours chatting, eating and drinking tea or traditional Kahvesi coffee, looking out over the yachts moored in this exclusive east of the city hideaway. Just for a moment, between mouthfuls of kebab, I was transported to a faraway exotic place and time, lulled by the easy, relaxed atmosphere of Kilikyas.

The Iskender Kebab is certainly big enough to share, but I suggest that just this once you make sure you have one entirely to yourself!

KILIKYA'S RESTAURANT
St Katharine Docks
London EC1
t: 020 7488 0813
w: www.kilikyas.com

SHIPBUILDING at Surrey Quays

The Surrey Quays Shopping Centre; its past, present and future



Everybody shipbuilding together

This summer Surrey Quays Shopping Centre invited youngsters from the local community to help out the visiting Lego team in building a giant ship, as an homage to the area's rich maritime

history. The three-metre long ship has been on display in the middle of the mall and Centre Manager Ian Moore announced a competition open for everyone to name the ship.

The 280,000 square-foot shopping centre first opened in 1988 and was quickly expanded by another 8.3 acres to include Surrey Quays

Leisure Park with a 9-screen Odeon cinema, Gala Bingo, Hollywood Bowl, restaurants and bars. It now stands as the retail hub of the docklands area with a number of major stores for men and women's fashion, sports and leisure, jewellery, accessories, entertainment and gifts.



Youngsters unite in the project



Centre Manager Ian Moore alongside the finished vessel

The Surrey Quays peninsula has gone through radical change in the past 30 years, most of which was linked to the London Docklands Development Corporation (LDDC), an agency set up by the government in 1981 to regenerate the east London area. The LDDC spearheaded a number of important ventures in the area, including the development of London City Airport, the ExCel Exhibition

Centre, Canary Wharf and of course the Surrey Quays Shopping Centre, generating a huge buzz in the area and creating more than 120,000 new jobs.

In the past few months big news has been announced for the shopping centre. Further phased development is planned to revamp the entire site and make it the destination shopping experience for south London with riverside

shopping and dining to rival the likes of Westfield in Shepherd's Bush and Stratford.

SURREY QUAYS SHOPPING CENTRE AND LEISURE PARK

Redriff Road

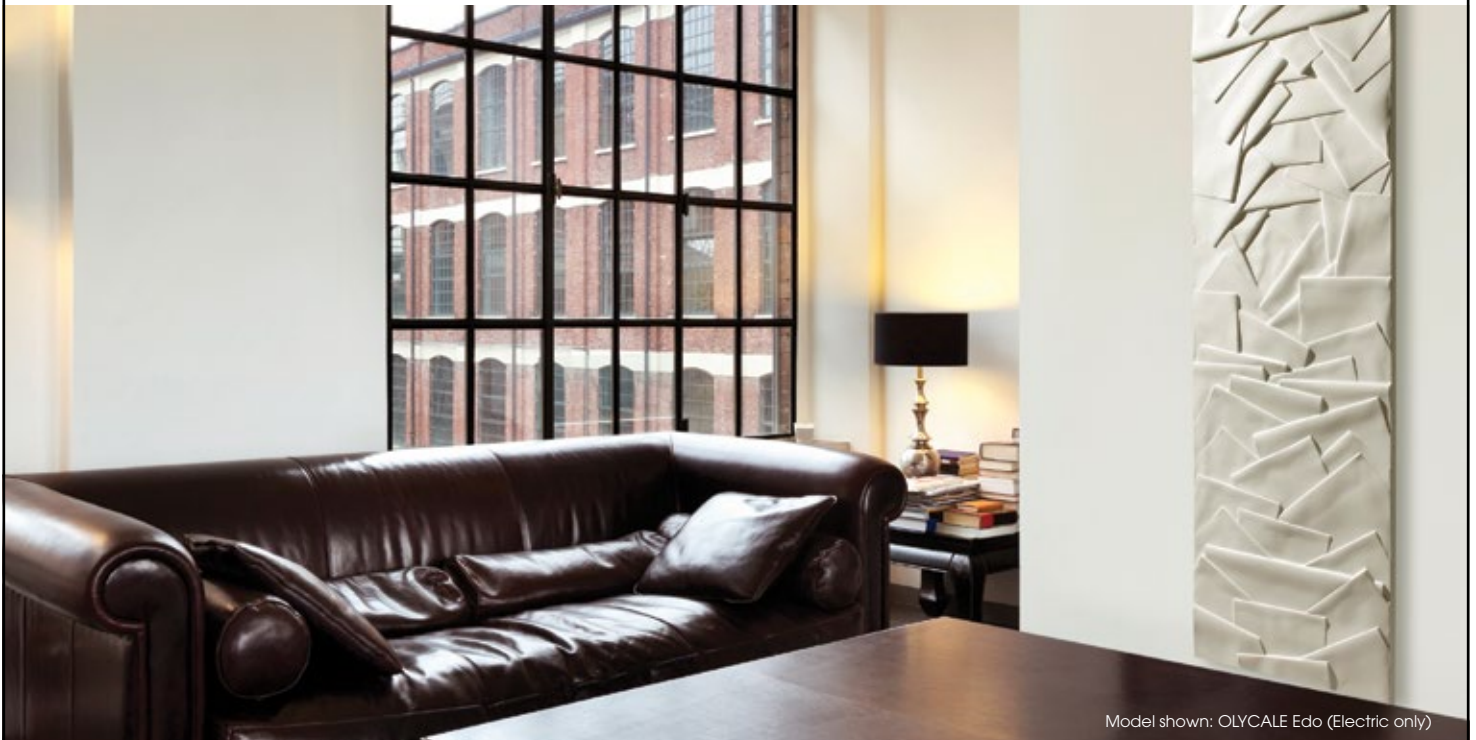
London SE16 7LL

Nearest trains: Canada Water and Surrey Quays (overground)
Canada Water (tube – Jubilee Line)

Cinier
contemporary radiators

The Art of Heating

Hand crafted from Pyrenees Stone



Model shown: OLYCALE Edo (Electric only)

Showroom at WC ONE,
20 The Circle,
Shad Thames, SE1 2JE

www.cinier.co.uk

info@cinier.co.uk
020 7378 9996

EVER HopeFull Rep.

“Youth is the gift of nature, but age is a work of art”
by Ruth Parr



Sarah Whitlock

The Ever HopeFull Rep Season is a collection of theatrical premieres in a pop-up venue in the heart of the city. This four play repertory season of new writing features artists aged 18-80, with the overarching theme being the lives of the over-forties.

The Plays

- **American Venus** by Leslie Mildner - Directed by Sarah Berger
- **This Thing Called Love** by Shelley Silas - Directed by Ben Caplan
- **Mercy** by Claire Whitehead - Directed by Jake Murray
- **The House** by Brian Parks - Directed by Keith Myers



Sarah Berger, Director of American Venus

- **Jog On** by Stephanie Smith & Monica Sik Holm - Directed by Charlotte Peters
- **Twain at 70** written by and starring David Patrick Stucky
- **The Golden Age of Theatre** - a talk by Nigel Nevinson

The So and So Arts Club

Founded three years ago the So and So Arts Club is dedicated to connecting artists from all disciplines and ages to foster support, collaboration and paid work. The So and So Arts Club is an internet based organisation which has grown to 1,200 members in nine different countries. The Club has generated paid work for over 400 actors, directors, writers and designers in the last three years.

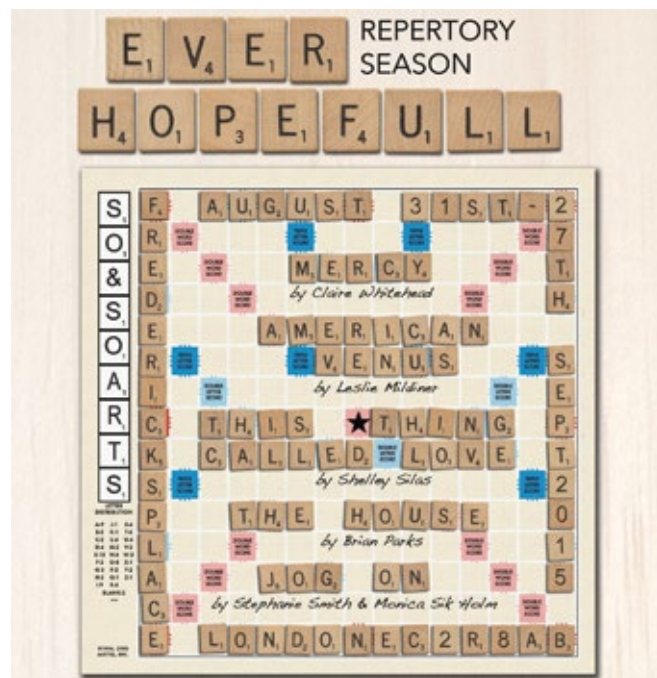
Sarah Whitlock, appearing in *Mercy*, said “Repertory theatre has always been a fabulous way to learn the trade but over recent years it has been replaced by fringe or free performance.”

“The Ever HopeFull Rep. is a great shop window to be seen in, and it’s marvellous fun!”

MERCY

By Claire Whitehead - directed by Jake Murray

Somewhere in the English countryside, Helen’s husband dies. As she ponders life without him, she re-examines all she has done - the unhappy love affairs, the missed opportunities, the small deceptions



that became big deceptions - until Dave, her first true love walks back into her world. Claire Whitehead’s moving and poetic play is a study of lives un-lived, regret and second chances, and the ever present need for mercy for all of us.

**TICKETS FOR ALL PLAYS
ONLY £10**

EVER HOPEFULL REP
The So and So Arts Club
Aug 31 at 7:00pm to Sep 27 at 10:00pm
6 Fredericks Place
EC2R 8AB
Nearest tube: Bank Station
e: sarahberger1@gmail.com
w: www.everhopefullrep.com

ENTERTAINMENTS

Listings

**NATIONAL THEATRE
SOUTHBANK
SE1 9PX
020 7452 3000**

The Red Lion
3 June – 30 September
A haunting and humorous new play about the dying romance of the great English game – football – and the tender, savage love that powers it

Three Days in the Country
21 July – 21 October
A handsome new tutor brings reckless, romantic desire to an eccentric household. Over three days one summer the young and the old will learn lessons in love

Jane Eyre
8 September – 10 January
This bold and dynamic re-imagining of Bronte's masterpiece shows one woman's fight for freedom and fulfilment on her own terms

Husbands and Sons
19 October – 19 January
DH Lawrence evokes a now-vanished world of manual

labour and working class pride, interweaving three of his greatest dramas and playing them simultaneously

As You Like It
26 October 2015 – 5 March 2016
Shakespeare's glorious comedy of love and change comes to the National Theatre for the first time in over 30 years

**SHAKESPEARE'S GLOBE
56 PARK STREET
SE1 9AR
020 7261 9565**

Measure for Measure
20 June – 17 October
Injustice, hypocrisy and the challenge of inflexible virtue combine in Shakespeare's most searching exploration of sexual politics and social justice

Richard II
11 July – 18 October
Dazzlingly eloquent and ceremonious, Richard II is Shakespeare's most searching exploration of the meaning of kingship and the rising powers that can destroy it

**GIELGUD THEATRE
35 SHAFTESBURY AVENUE
W1D 6AR
0844 482 5130**

The Curious Incident of the Dog in the Night-Time
Until 24 October
This acclaimed production of Mark Haddon's award-winning novel, adapted by Simon Stephens and directed by Marianne Elliott, has won 7 Olivier Awards – including Best Play in 2013

**THE OLD VIC
103 THE CUT
SE1 8NB
020 7928 2651**

Future Conditional
1 September – 3 October
Alia has a radical solution for Britain's schools that could restore our place in the world education league. But is the system ready to take lessons from a schoolgirl? Also starring Rob Brydon





Jayne Eyre



As You Like It



Macbeth

The Hairy Ape

17 October – 21 November
A classic expressionist masterpiece by Nobel prize-winner Eugene O'Neill, a labourer is forced to confront primal questions about his true place in the world

THE YOUNG VIC

66 THE CUT
SE1 8LZ
020 7922 2922

Song from Far Away

2 – 19 September
An unforgettable tale of an estranged family and lost love, written by Simon Stephens (Curious Incident) and directed by Ivo Van Hove (Streetcar)

La Musica

24 September – 17 October
Marguerite Duras' lyrical and poignant study of the damage we inflict on those we love receives its first London revival in two decades

Macbeth

26 November – 16 January
Beginning with Shakespeare's text, powerful choreography culminates in an unforgettable final act where words falter and finally give way

THE ROYAL COURT THEATRE

SLOANE SQUARE
SW1W 8AS
020 7565 5000

Hangmen

10 September – 10 October
Local celebrity and second-best hangman in England Harry finds his life takes a peculiar turn after hanging is abolished

Roosevelvis

21 October – 14 November
On a hallucinatory road trip from the Badlands to Graceland, the spirits of Elvis Presley and Theodore Roosevelt battle over the soul of Ann, a shy meat-processing plant worker

MENIER CHOCOLATE FACTORY

53 SOUTHWARK STREET
SE1 1RU
020 7378 1713

Dinner With Saddam

10 September – 14 November
What happens when Saddam Hussein turns up on your doorstep and announces he is staying for dinner? Find out in Anthony Horowitz's new comedy

UNICORN THEATRE

147 TOOLEY STREET
SE1 2HZ
020 7645 0560

Martyr

15 September – 10 October
Fundamentalism and tolerance clash in this funny, provocative play, which asks how far we should go in accommodating another's faith (ages 15+)

BATTERSEA ARTS CENTRE

LAVENDER HILL
SW11 5TN
020 7223 2223

A House Repeated

7 – 24 October
Inspired by choose-your-own-adventure stories and early computer games, this highly

interactive show invites you to explore rooms real and imagined without leaving your seat

WHITE CUBE

144 – 152 BERMONDSEY STREET
SE1 3TQ
020 7930 5373

Robert Irwin

23 September – 15 November
Irwin uses light and subtle alterations of space to refocus the habituated eye, encouraging an awareness of the visual field around us

DESIGN MUSEUM

28 SHAD THAMES
SE1 2YD
020 7403 6933

Life on Foot: Camper at the Design Museum

13 May – 1 November
Embark on a creative journey into how traditional shoemaking has been shaped by contemporary design and new technologies

TATE MODERN

BANKSIDE
SE1 9TG
020 7887 8888

Agnes Martin

3 June – 11 October
Working within tight, self-imposed limits Martin was able to continue to make extraordinary, visionary paintings for over three decades until her death in 2004

I AM

A RUNNER

A WEIGHT LIFTER

A DANCER

A GYMNAST

A CYCLIST

A YOGI

TOWER BRIDGE

JOIN NOW



WHAT WILL YOU BECOME?

MIX UP YOUR TRAINING WITH OUR EXTENSIVE PREMIUM SPORTS & HEALTH FACILITIES.



BERMONDSEY STREET FESTIVAL

The village fête in the city returns Saturday 19th September

As September rolls around once more the local residents and businesses of Bermondsey Street and beyond can again look forward to a day of fun activities, delicious food and drink and fantastic entertainment. With the Street and surrounding roads traffic-free for the day, the shops, galleries, cafés, restaurants, bars and businesses will open their doors to share their wares with locals, friends and visitors.

“The festival will honour Bermondsey’s reputation as ‘London’s Larder’

The festival debuted in 2007 when Michael Davies of the Bermondsey Street Area Partnership challenged the community to produce a festival in 3 weeks. With help from the council and local businesses, the committee was able to produce the first festival in Tanner Street Park, with about 30 stalls, a maypole, a dog show and music. Since then the

festival has gone from strength to strength and 2015 promises to be better than ever!

Supported this year by Simplicity Café and Restaurant in Rotherhithe, the Festival will see more than thirty local restaurants bringing their food to the streets for your enjoyment – and will truly honour Bermondsey’s reputation





as London's Larder. Liquid refreshments are covered too with Bermondsey Street's vibrant bars and pubs serving drinks in the park, and the local Southwark Brewery will have its own Festival ale should you wish to imbibe.

Of course it's not just food for the belly but food for the soul, too, as artists, musicians, dancers, actors and fashionistas prepare to present their work and talents across a range of stages and on the streets.

This year, maypole dancing returns, as does the dog show, organised by locals Holly & Lil and located in Leathermarket Gardens. Other entertainment on offer includes a jazz orchestra, salsa dancing, choir singers, local bands and more. If something a little more calm and historical is your thing, why not join one of the walking tours – just meet outside Tanner & Co at 11.30am, 1pm or 2.30pm.

Whatever your tastes, there's

bound to be something to see, to do or to eat at the Bermondsey Street Festival. We look forward to seeing you there!

Official running time of the festival is 11am-6.30pm, with most stalls closing at 6pm.

To see the full list of who and what will be at the festival, visit www.bermondseystreetfestival.org.uk

the lounge hair salon

ESTABLISHED SINCE 2000

Monday	9:30am – 6:30pm
Tuesday – Friday	9:30am – 8:00pm
Saturday	8:30am – 5:30pm
Sunday	10:00am – 4:00pm

Autumn Hair & Beauty Packages

Looking to brighten up your highlights or get rid of those roots?

Hair

- **50% off** haircuts with all colour services
- **£5 off** all men's haircuts

Beauty

- Dermalogica Mini Facial with FREE eye brow shape **Only £25**

* Offers only available MON-THURS 9.30am-3.30pm, until 31/12/15

* Cannot be used with any other offer

* ADVANCE STYLIST & STYLIST level only

CLOSE TO BERMONDSEY TUBE STATION



The Lounge Hair & Beauty Salon
200 Jamaica Road, Bermondsey, SE16 4RT
Free car parking exclusively for clients

020 7237 2624

www.loungehairbeauty.co.uk

Please mention
THE RIVER Magazine
when booking





THREE DAYS in the country

John Simm leads a fantastic ensemble cast at the National
by Joe Campbell

Based on Ivan Turgenev's 1869 drama *A Month in the Country*, Patrick Marber's adaptation tells the story of a handsome and articulate tutor who arrives at a wealthy family's estate to help a young boy with his studies. His arrival, however, ignites love and lust in a number of family members.

Three Days in the Country is a story about love. It is not, however, a love story in the conventional sense. Whereas one might think of a love story as a tale of two people overcoming hardships thanks to the triumphant qualities of love, what Turgenev's play and Marber's interpretation shows us is the honest, uncomfortable truths of love. That it is a powerful emotion, one which can be destructive if



handled badly. During the course of the play the darker sides of love and passion are revealed; jealousy, anger,

frustration, pettiness, denial and helplessness. Moreover, it is done with a tremendous amount of wit

and cynical humour too.

The intelligent staging of the play is one of its most enjoyable aspects, echoing Brecht's 'Epic Theatre' – the theory that performance can be a vehicle for objectivity and self-reflection, rather than just an escape into an alternate reality. Towards the back of the stage each actor and actress sat in a row of chairs, visible to the audience even when not 'on-stage', reminding us that we were watching a performance and forcing us to be analytical of what was being said, rather than becoming lost in a 'story'. At times I stopped seeing Simm as the misanthropic Rakitin, and saw his despondency as an exaggeration of my own frustrations. The minimalistic set and snappy, rarely-a-line-wasted dialogue added to this clever disillusionment, ensuring that the audience were never distracted by unnecessary chatter.

The Lyttelton Theatre at the National is no small performance area and the director was not afraid to use the space as much as possible. Making sure the actors stayed a fair distance apart gave a great impression of the vast and expansive Russian countryside, and also meant that when the characters did get close, their coming together was more meaningful.

John Simm in his various television and film roles is an actor who manages to vocalise frustration and entrapment extremely well and his lovesick Rakitin is just as powerful. His punchy sarcasm is a joy as it cuts through the mounting tension. Mark Gatiss (Wolf Hall, Game of Thrones) is also very funny as the eccentric, yet brutally honest doctor Shpigelsky. In fact, each character manages to effectively portray a different convention of love, and Lily Sacofsky, in her theatrical debut, does a solid job of illustrating the recklessness of first love.

Three Days in the Country shows us that love is not always the pure thing we hope it to be. Love can steer people towards bad decisions, love is the shards we are left to pick up after being shattered, it is the jealousy and anger of unrequited affection and the tragedy of a truly broken heart that never fully heals.



“Marber’s interpretation shows us the honest, uncomfortable truths of love



The characters, in turn, articulate these despairing feelings in a way that most of us at some point in our lives have wanted to.

The play is certainly not all doom and gloom; there is a huge amount of humour and charm borne of each character's flawed personality. So even though the setting, characters and costumes are from another time and place, the message remains universal.

THREE DAYS IN THE COUNTRY

From 21 July to 21 October

The National Theatre
Upper Ground, South Bank
SE1 9PX

t: 020 7452 3000

w: www.nationaltheatre.org.uk

PENCILS down



With a first prize of £8,000,
who will win the coveted Jerwood Drawing Prize?

The Jerwood Drawing Prize is the largest and longest running annual open exhibition for drawing in the UK. Selected from original drawings, the Jerwood Drawing Prize has established a reputation for excellence, and for promoting and celebrating the breadth of contemporary drawing practice within the UK. The exhibition provides a platform to showcase the work of drawing practitioners, from student to established, and as a project helps to define a wider understanding of the role and value of drawing in creative practice.

The longevity of the prize, which has been running since 1994, is a testament to the appetite of the artists who make drawings, and the continued interest of audiences visiting the exhibition, making it one of the most popular shows in the Jerwood Visual Arts programme. A total of 60 works by 58 artists, including one collaboration, have been carefully selected for exhibition by the panel: Dexter Dalwood (artist), Salima Hashmi

(artist, curator and writer) and John-Paul Stonard (art historian).

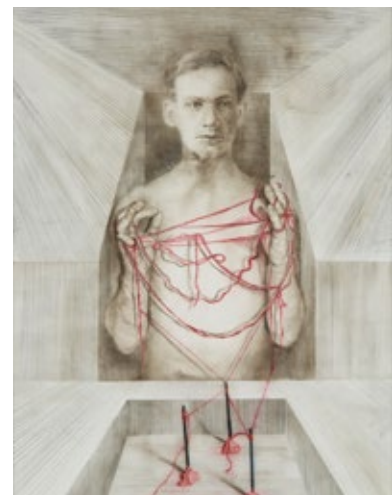
According to Stonard: "The Jerwood Drawing Prize is one of the most important art prizes in the UK, and unique for focusing on the medium of drawing. It was inspiring to see the range of entries, not only drawings in the traditional sense, but also drawing as a process seen through other media, including sculpture and video. The drawings selected were those that had the energy of a personal vision, and showed dedication to the medium." The First Prize of £8,000, Second

Prize of £5,000 and two Student Awards of £2,000 each, will be announced and awarded to the winning artists at the preview on 15 September. The exhibition will be on display at the Jerwood Space, London from 16 September – 25 October 2015.

JERWOOD VISUAL ARTS

Jerwood Space
171 Union Street
SE1 0LN
t: 020 7654 0179

w: www.jerwoodvisualarts.org



Playtime at The Dominic,
Battersea

EDUCATION for everyone

Interviews and insights with key leaders in our area.

There are few things more important than education. Being taught how to read, write and do sums, how to think, how to analyse and how to interact with others can be the difference between somebody finding their place in society or feeling disconnected from the world.

Whether it is a first time parent fretting over what school they should or even can enrol their child into, or an adult who finally decides to change their life by learning something new, beginning that journey of education can be daunting.

Although 2012 saw a dip in the number of University entrants, 2013 and 2014 both saw record numbers of successful applicants become undergraduates. Considering the sharp rise in tuition fees over the last few years, this could be an indication of a number of things. Are schools performing better? Are students aiming higher? Or are we as a nation just taking our education more seriously? Perhaps it is a mixture of all three, but whatever the reason, the thought of being 'left behind' without an education to be proud of is a scary one, so choosing the right school is one of the more important decisions one usually has to make.

In this, our first autumn guide to the best local schools and educational establishments, you can find out about a school whose headteacher was awarded an OBE for services to education, a school who specialise in teaching children with dyslexia and learning difficulties, a place that fosters creativity in adults, a school who have served the community for over three-hundred years and more.

We have also included a list of all of their open days on page 36, so you can plan a visit for yourself.



**Southwark
Primary
FREE SCHOOL**

where children learn, aspire and achieve

**Missed out on your first choice of primary school?
Well, we've just expanded and have places for
children in Reception through to Year 3.**

*Our learning is child-led, with a vibrant curriculum,
fantastic new facilities, specialist PE teaching and
strong links with an outstanding London Academy.*

Interested?
Then call: 020 7635 4256
or email: southwarkfreeschool@gmail.com
to arrange a visit.

Southwark Primary Free School
Ledbury Hall, Pencraig Way
SE15 1SH



PURE excellence

A relentless drive for outstanding performance is behind the progress at Walworth Academy

Over the last two years a transformation has been taking place at Walworth Academy, impacting every level. A bold demand for 100% consistency from each pupil and every teacher coupled with an unforgiving 'No excuses' approach to anything short of success, has put in place an impressive foundation for excellence.

The aim is to ensure that every young person in the academy is confident that university is a real possibility, either through 'A' Level achievements or BTEC qualifications. With this in mind, all new Year 7 children visit a university so they can see what is ahead of them - should they achieve their potential. Right from the start students are also introduced to a seven-year curriculum so they can see the big picture with clear milestones marked out en route.

The character of the children is something that is central to the new rigour introduced at Walworth; pupils are encouraged to support and look after each other, there is a zero-tolerance approach to any violence or aggression and a very

active practice to teach children to manage difficulties by talking and listening.

With firm goals set and parameters for behaviour clearly drawn, a quality education can begin.

Rigour does not begin and end with pupils at Walworth. Principal Yvonne Powell has a programme of reflective practice for all teachers too. Three times a term they can attend courses for improving techniques, sharing successful methods to bring back into the classroom as they learn. Filming classroom performances and subsequent reviews allows teachers to adapt and enhance the education they deliver throughout the year.

It is this kind of attention to detail that is establishing a high bar for behaviour, results and achievement, and is what is steering the school in the direction of an 'outstanding' Ofsted rating.

There is also a set of 'family' values at Walworth Academy – CARES – which stands for

- C: Commitment
- A: Aspiration
- R: Resilience
- E: Excellence
- S: Self Management

These qualities are expected from everyone at the school, whatever age and role they have.

Higher achievers are invited to take on additional challenges in the 'Brilliant Club' and already three students have recently won places at Russell Group Universities to study Medicine with and one student with a confirmed offer of a place at the University of St Andrews in Scotland.

Yvonne Powell has come from Little Ilford School, where she achieved 'Outstanding' levels twice, and began leading Walworth Academy in January 2013, around which time she was awarded an OBE for her Services in Education. What Ms Powell is achieving here is a true community school that is engaging and serving the people around it, so be sure to visit on the Open Days and see it for yourself.



WALWORTH ACADEMY

Shorncliffe Road
SE1 5UJ

t: 020 7450 9570

OUTSTANDING in all areas

The Dominie, a co-educational school for children with dyslexia and dyspraxia



if your child has not taken to reading as you expected or is showing a reluctance to write, there may be a myriad of reasons why, but these are flags that can suggest some form of dyslexia, dyspraxia or other associated learning difficulty.

As Anne O'Doherty, the Principal of The Dominie in Battersea explained, 'Children want to learn, they are naturally curious. If they are having trouble, it may be something as simple as the child needing an eye test. Whatever the reason, if steps are taken, children can be supported and helped.' A simple series of checks and educational assessments can be made to discover the reasons for any difficulties before deciding on the best course of action.

The Dominie, located near Battersea Park in a converted Victorian warehouse, is a school in every sense. It is a truly local, nurturing environment that provides all of the usual school elements: a class structure, prefects, clubs, sports days and a Christmas play, but there are many extras too, not least Maisie, the school dog, who is a very popular member of the school community!

Children come with detailed personal reports and leave with the same, making sure their transition back into mainstream education is as carefully managed as their arrival at The Dominie. Before a pupil can join the school a three-day assessment is carried out so parents and teachers have a detailed profile and understanding of each child and their needs. With this knowledge a personalised education plan is constructed. Exceptional attention to detail like this is made possible at The Dominie due to a capacity of just thirty-two pupils grouped into four classes.

The first base of support for children begins with self-esteem. Once a child, who may have already begun to lack confidence or feel frustrated, has been reassured and filled with confidence, helping them fulfill their personal and academic potential can begin.

One of The Dominie's philosophies is to teach the way children learn. In the classroom specialist teachers and therapists work as an integral part of the learning process. Teaching follows a modified national curriculum and includes philosophy, music, drama, art and games. During their stay at The Dominie children become equipped with strategies for their own personalised learning so they can return to mainstream education brimming with confidence.

Anne O'Doherty is originally from Wimbledon and trained in SpLD (dyslexia) at St Bartholomew's Hospital. She taught in the East End and was Head of Lower School at Thomas's Kensington before moving on to

the Dyslexia Teaching Centre in Kensington where she became Co-director. In 2007 she became the Principal of The Dominie.

Her leadership priorities are all about the children and their needs plus the qualities of and appreciation for her staff. It could not have been more clearly demonstrated when, at the end of our meeting she added as a throwaway remark, 'The children have lovely big badges too, with 'The Dominie is Outstanding' written on them – Oh, did I mention that our latest Ofsted Report rated us as 'Outstanding' in every category?'

What the school does and how it does it was intensely clear and in focus at all times; achieving 'Outstanding' ratings seemed almost incidental. Top class.

THE DOMINIE
55 Warriner Gardens
SW11 4DX
t: 020 7720 8783

THE POETRY SCHOOL
WHERE POETRY HAPPENS

'Courses at the Poetry School have enriched my life, providing many links with all sorts of other people engaged in the same processes of trying to write poetry. They have provided continuous challenge and stimulation to keep going. Not to mention encouragement!'

Poetry School student,
Summer 2015

Learn, teach, swap, grow, think, talk, read, write, compose, translate, transform at the Poetry School in Lambeth. Where poetry starts.

Join a community of poets, see your poetry flourish
New term starts 14 September

Visit www.poetryschool.com
or call 0207 582 1679 for more details



Boys will be competing with girls in Science, Mathematics and Engineering



New uniform celebrating 330 years



A long history of education and excellence in London



Boys and girls will be educated in classrooms separately up to Key Stage 5

330 YEARS & Girls Allowed

A year to be proud of; an exceptional past and a promising new future at Archbishop Tenison's School in Kennington

There is a lot to celebrate at Archbishop Tenison's School this year and it is not just that they have been providing a quality education to children for a staggering three hundred and thirty years. This

September, the doors are opening to girls too in this previously all boys school.

Admittedly, girls have been attending the Sixth Form for some years but this autumn Year 7 is open to girls for the first time. Archbishop Tenison's have adopted what is called the 'Diamond Approach', in which boys and girls join together but are educated in classrooms separately until Key Stage 5. This means that Archbishop Tenison's is now offering something that few non-independent schools in the country offer: a single sex education in a co-educational setting.

In the classroom boys and girls are able to learn and develop in ways that best suit their gender. During PSE, tutor groups and play time they are mixed so they can enjoy and learn a wider range of people skills.

Archbishop Tension's Principal, Elizabeth Sims, is confident this approach will offer pupils the very best of both worlds with an interesting competitive element between the boys and girls whilst also bringing in more social interaction for the boys already at the school. Unsurprisingly, with its long history of being boys-only, the school has a strong pedigree in science-related subjects. This year will offer girls a fantastic opportunity to step up and compete in Science, Mathematics and Engineering.

When London was still mostly built of wood and suffered in the Great Fire of 1666, Charles II was on the throne and Oliver Cromwell's army had just

taken the country through a civil war to deliver a new kind of Parliament. It was shortly after this time, in 1685, that Archbishop Tenison's school was established to teach poor children in the crypt at St Martin in the Fields, Trafalgar Square. This philosophy of care and provision of equal opportunity and education for all children is a deep-rooted one that survives with a justified pride at the school still.

The premises eventually relocated across the river and the school has been sustained and well attended ever since. It continues with a little over five hundred pupils divided into four houses to which every child and employee (from teachers to cleaners) is assigned to one. These 'houses' pull together creating a sense of family pride and not just a little healthy competition too. Open to pupils of any faith (or none), the school still enjoys a strong association with the Church of England with 70% of pupils recorded as church-going, yet another tenet creating a close-knit community in which all teachers and pupils generally know at least everyone's face, if not their name.

South London has many famously good schools that pupils wait on lists to get into but unknown to many is the fact that Archbishop Tenison's out-performs most when it comes to improvement statistics, being in the top four performing schools in Lambeth.

This is a jewel in the crown of education in Kennington and its future is as bright as its past is deep.

ARCHBISHOP TENISON'S SCHOOL

55 Kennington Oval
SE11 5SR
t: 020 7735 3771

PRIME school

Southwark's Free Primary School has links to the meadows and woodland of Pickhurst's Forest School and lots more new facilities on site too

With six new classrooms, new facilities including a multi-use games area, an all weather soft play and a new Year 3, Southwark Primary Free School has extra capacity this September to welcome even more local children into a secure, happy and stimulating environment.

A not-for-profit organisation, the Southwark Free Schools Trust has been set up to run an outstanding new primary school in the borough and the Southwark Primary Free

School, a mixed state primary open to all pupils aged 4 to 11, is the result placed right at the heart of the community.

Vicki Buckland, Head of the School, is in charge of the day to day running of the school and has in-depth of experience at schools and academies in nearby Peckham. Strategic support is provided by Matt Rampton (a National Leader in Education) as Executive Principal who is also Executive Principal at Pickhurst Infant and Junior Academies. These links and access to the resources of other schools make Southwark Primary Free

School small enough to deliver quality teaching to its 53 pupils and yet able to cherry pick the benefits available in the wider community too.

There are still spaces for September and open days are now listed on page 34!

SOUTHWARK PRIMARY FREE SCHOOL

Ledbury Hall, Pencraig Way
SE15 1SH
t: 020 7635 4265

The Dominie



An outstanding independent primary school for children with dyslexia and associated learning difficulties.

www.thedominie.co.uk

55 Warriner Gardens, London SW11 4DX
Tel: 020 7720 8783



THREE schools in one

In just five years an east London school has been transformed into a beacon of aspiration

Success is the best word to describe what is happening at the Bishop Challoner Catholic Federation of Schools.

Academic success, community success, organisational success and spiritual success. Just five years ago only 50% of pupils at Bishop Challoner were achieving 5 GCSEs (including English and Maths) and this was not surprising taking into consideration the challenges and disadvantages facing the pupils, staff and community of Whitechapel and Tower Hamlets.

This year it is celebrating four students going on to Oxbridge universities and recent results that show 79% of pupils achieving 5 GCSEs including English and Maths.

The Bishop Challoner Federation offers a traditional academic education, with less emphasis on BTECs or GNVQs to achieve targets, focusing on GCSE and 'A' Level qualifications for all students instead. Nick Soar, the newly appointed Executive Principal for

the federation of all three schools, suggested a number of reasons behind this positive change.

'Firstly, the federation structure has made a big difference. We now have three schools working in unison,' Nick explained. 'This allows the sharing of the best teaching research and ideas, standards and staffing budgets.' As Britain's first federated school, the campus now has a Boys' and a Girls' School, as well as a Sixth Form College.

'Another contributing factor,' Nick continued, 'is the quality of teaching that has radically improved over the last five years. 80% of the 125 teachers, are new faces from five years ago.'

Teach First, based on an American concept, is a model in which high-flyers fresh from university are encouraged to take a year or two teaching in under-privileged communities. This way some of the 'success dust' is sprinkled where it is needed most before these super able and ambitious individuals go on to high-powered city jobs. A disproportionate number of these individuals have come to Bishop

Challoner because of the school's early engagement with the scheme.

Nick also explained how the school has been both patient and brave in its approach to recruitment. 'Not only have we grown talent from within, nurturing individual staff, turning teachers into pastoral leaders and bringing talent into the leadership team but we have resisted filling positions if the individuals were not right. We have trusted our judgement and often taken on additional exceptional teachers in order to secure quality individuals even when positions are already filled, just to get and keep that talent.'

This may be a luxury that most schools could not afford but the





Sixth Formers Heading to Oxbridge: (from left to right) Nermeen will be studying History at Balliol College, Oxford, Esther studying Psychology at Cambridge, Mila studying Psychology at St John College, Cambridge and Bruno studying Physics at Jesus College, Cambridge.

funding Bishop Challoner have in place is not just state supplied - it has been secured by the endeavours of the leadership team who have won the support of businesses like marketing agency Ogilvy & Mather and the American bank Wells Fargo.

Wells Fargo sponsor a reading and maths scheme at Bishop Challoner to the tune of \$10,000 per year and it is connections like these, established by Nick and his team, that have a massive impact on day to day performance at the school. The close relationship with Ogilvy & Mather provides more than just work experience for pupils but a detailed and sustained program instead. Thirty to forty students go for two days and work together on a project like planning a marketing campaign. This is followed by a formal two weeks of work experience and ongoing careers advice and mentoring from Ogilvy staff.

According to Nick Soar, the biggest driving force behind the leaps in improvement at the federation has been 'the belief that high ambitions and aspirations work just as well for disadvantaged children as they do with pupils from the leafier suburbs.'

Established by Irish Catholic nuns in 1850 as a girls school in Whitechapel, an area famously challenged by poverty, underpinning each of the schools and the Federation is a strong prayer-centred vibrant Catholic ethos. Tolerance and a moral code based on 'love of God, love of the self and love of each other' is a core appeal to many of the parents whose children attend Bishop Challoner.

Nick Soar takes the reins this September as Executive Principal at Bishop Challoner and the senior leadership team for each of the schools is now as follows:

- Paul Stone: Head of Bishop Challoner Boys' School
- Chantelle Easmon-Johnson: Head of Bishop Challoner Girls' School
- Mrs Helen Livermore and Mr Andrew Warburton: Joint Heads of Bishop Challoner Sixth Form

As Nermeen, Esther, Mila and Bruno each prepare for their Oxbridge starts this autumn, the future for the younger children in E1 is looking brighter than ever too.



Nick Soar, the Executive Principal for the Federation

BISHOP CHALLONER CATHOLIC FEDERATION OF SCHOOLS

352 Commercial Road
E1 OLB
t: 0207 791 9500
e: info@bishop.towerhamlets.sch.uk
w: www.bishop-learningvillage.towerhamlets.sch.uk

CREATIVITY & collaboration

Lambeth's Poetry School is the place for the aspiring wordsmith

Tucked in behind a little run of shop fronts on Lambeth Walk is The Poetry School. Established in 1997, the school is the place to go if you've ever had an interest in learning how to write poetry. Of course you can expect to learn how to compose a sonnet, a sestina or a limerick, but more than that, the Poetry School will introduce you to a community of fellow poets who work together on a range of collaborative projects, such as arranging readings and getting work into print.

According to Julia Bird, Head of Programmes, "The Poetry School welcomes poets of all levels and experience through its doors. Our definition of 'beginner' is somebody who is in love with words and wants

to learn how to start arranging the best of them into the best order. Anyone with the smallest spark of literary interest can come to one of our sessions and start to develop their talent. We've got students of all ages, backgrounds and inclinations. They're a very supportive bunch."

The Poetry School is set to begin its new term on 14 September. One of the real joys of their approach to learning is their range of options that can fit around most schedules. You can enrol for a year-long immersion into the technical nuts and bolts of poetry or drop in for a one day session creating poetry based on 'Wolf Hall'. You can even write food poetry alongside a tasting menu; they have something for everyone with a creative spark, and something for those that want to

find one.

So if you think you're someone who has a certain way with words, why not flex your poetic muscles – Eve Grubin, one of the school's poet-tutors, has provided a writing prompt for you to have a go at:

- Write a list of ten words you think would never appear in a love poem. Now write a love poem using those words.

Details of The Poetry School's courses and more can be found at www.poetryschool.com

THE POETRY SCHOOL
81 Lambeth Walk
SE11 6DX
t: 020 7582 1679



Walworth Academy
Shorncliffe Road, SE1 5UJ
020 7450 9570
www.walworthacademy.org



"Building on our positive Ofsted inspection we are renewing our drive for high attainment, to ensure every student reaches their potential, from Year 7 to Year 13. Our students deserve the best – excellent teaching, great facilities, committed staff – and that is what we provide at Walworth Academy. We ensure all students have the skills and qualifications to go to university or to follow a career of their choice."

Yvonne Powell, OBE



Principal Yvonne Powell



Specialist support by Walworth has led to a significant increase in students going to university to study medicine and bio-medicine.



Open Day Events

Wednesday 16th September 2015 9.10am to 10.15am
Thursday 17th September 2015 9.10am to 10.15am
Friday 18th September 2015 9.10am to 10.15am
Wednesday 7th October 2015 5.00pm to 7.30pm

- Commitment
- Aspiration
- Resilience
- Excellence
- Self-management

Following the 2015 'A' level results, all of Walworth's university applicants have been offered a place at University.

At GCSE, Walworth students achieved a significant increase in passes at A*, A and B grades.

An Ark school



Bishop Challoner Catholic Federation of Schools



Open Evenings

Boys' School

Tuesday 22nd September, 5-7pm

Parents may also visit the school for tours at 9:00am and 9:30am every Tuesday from 14th September - 12th October.

Results are impressive again in 2015 and build on the success of our Ofsted report, which rated leadership and behaviour as 'Outstanding' in the Boys' School.

"The high-quality of guidance on various future pathways prepares students well for higher education or the world of employment."

Girls' School

Monday 14th September, 5-7pm

Parents may also visit the school for tours at 9:00am and 9:30am every Tuesday from 14th September - 12th October.

This year 1 in 4 students received at least four A-A grades at GCSE, particularly impressive against a national picture of higher grades falling.*

This fantastic news comes after the Ofsted report deeming the School 'Outstanding' in all areas.



'A' STAR students

Year on year success for the girls at St Saviour's & St Olave's



A Star Pupils (from left to right): Larise Cummings, Emily Wong, Samantha Hunter, Fraciska Howarth, Dana Nurse

For the fourth year in a row St Saviour's and St Olave's students have achieved impressive 'A' level results with over 50% of grades between A* and B.

There was also a stunning 100% pass rate.

Samantha Hunter (grades: A*A*AA) will take up a place at Imperial College in London to study Physics, Emily Wong (grades: A*AAA) will study Psychology at University College, London, and Magdalene Kasshun will be going to Southampton to study Medicine.

Other 'A' grade students in all subjects were Franciska Howarth (grades: A*AA), Larise Cummings and Dana Nurse (both with grades: AAA).

Head of 6th Form, John Breslin, was delighted saying, "This confirms my belief that whether you are aiming for the best universities or the most prestigious industry placements, St Saviour's girls have shown that with hard work and commitment, you can achieve these goals. We are heavily oversubscribed for entry in September 2015 and this is testament to the outstanding reputation that our staff and students have established."

ST SAVIOUR'S & ST OLAVE'S SCHOOL

New Kent Road

SE1 4AN

t: 020 77407 1843

w: www.sso.southwark.sch.uk



*A local centre of excellence for girls for more than 100 years,
our motto is
'Heirs of the past
Children of the present
Makers of the future...'*

Open Days

Thursday 17th September 10am

Talk and questions with the Headteacher at 10.45am

Tuesday 22nd September 6pm - 8pm

Talk and questions with the Headteacher at 7.30pm

Wednesday 23rd September 10am

Talk and questions with the Headteacher at 10.45am

Thursday 1st October 10am

Talk and questions with the Headteacher at 10.45am



Quotes from pupils to newcomers:

"Year 7 is one of the most exciting years you will have at secondary school as it's the year you meet your future best friends, learn lots of new things and go on amazing trips."

Leah

"St Saviour's & St Olave's is an amazing school - everyone is very supportive. On top of that, the school's atmosphere is very warm and welcoming."

Matilda

Building on traditions to provide an education for tomorrow



Celebrating our 330th anniversary

ARCHBISHOP
TENISON'S SCHOOL

From September 2015 girls are being admitted into Year 7 for the first time and will be taught separately up to Key Stage 5.

Combining the best features of single-sex education in a co-education setting.



"Students manifestly enjoy their education and speak highly of the school. Spiritual, moral, social and cultural development is outstanding."

OFSTED

ARCHBISHOP TENISON'S SCHOOL
55 Kennington Oval
London SE11 5SR

Tel: 0207 735 3771
Email: school@ats.lambeth.sch.uk
Website: www.tenisons.com

OPEN DAY EVENTS

this Autumn

ARCHBISHOP TENISON'S SCHOOL
55 KENNINGTON OVAL
SE11 5SR
020 7735 3771

w: www.tenisons.com

Tuesday 22nd September	9.00 - 10.30am
Wednesday 23rd September	9.00 - 10.30am
Thursday 24th September and 5.30 - 7.30pm	9.00 - 10.30am
Wednesday 30th September	9.00 - 10.30am
Tuesday 6th October	9.00 - 10.30am and 5.30 - 7.30pm

ARK ALL SAINTS ACADEMY
140 WYNDHAM ROAD
SE5 OUB
020 7450 5959

w: www.arkallsaintsacademy.org

Wednesday 16th September 2015	5.00pm – 7.00pm
Saturday 19th September 2015	9.30am – 11.30am
Monday 21st September 2015	9.30am – 11.30am
Thursday 24th September 2015	9.30am – 11.30am

BISHOP CHALLONER CATHOLIC FEDERATION OF SCHOOLS
352 COMMERCIAL ROAD
E1 0LB
020 7791 9500

w: www.bishop-learningvillage.towerhamlets.sch.uk

Monday 14th September 2015	5.00pm – 7.00pm
Girl's School	
Tuesday 22nd September 2015	5.00pm – 7.00pm
Boy's School	

Parents may also visit for tours at 9.00am and 9.30am every Tuesday from 14th September – 12th October

THE DOMINIE
55 WARRINER GARDENS
SW11 4DX
020 7720 8783

w: www.thedominie.co.uk

Please contact the school to arrange a visit.

THE POETRY SCHOOL
81 LAMBETH WALK
SE11 6DX
020 7582 1679

w: www.poetryschool.com

Please contact the school to arrange a visit.

JOHN CASS REDCOAT SCHOOL
STEPNEY WAY
E1 ORH
020 7790 6712

w: www.sjcr.net

Monday 28th September 2015	5.00pm – 7.00pm
Main School	
Tuesday 22nd September 2015	5.00pm – 7.00pm
Sixth Form	
Wednesday 2nd December 2015	5.00pm – 7.00pm
Sixth Form	

SOUTHWARK PRIMARY FREE SCHOOL
LEDBURY HALL, PENCRAIG WAY
SE15 1SH
020 7635 4256

w: www.southwarkfreeschool.com

Please contact the school to arrange a visit.

ST. SAVIOUR'S & ST. OLAVE'S SCHOOL
NEW KENT ROAD
SE1 4AN
020 7407 1843

w: www.sssso.southwark.sch.uk

Thursday 17th September 2015	10.00am
Tuesday 22nd September 2015	6.00pm – 8.00pm
Wednesday 23rd September 2015	10.00am
Thursday 1st October 2015	10.00am

WALWORTH ACADEMY
SHORNCLIFFE ROAD
SE1 5UJ
020 7450 9570

w: www.walworthacademy.org

Wednesday 16th September 2015	9.10am – 10.15 am
Thursday 17th September 2015	9.10am – 10.15 am
Friday 18th September 2015	9.10am – 10.15 am
Wednesday 7th October 2015	5.00 pm – 7.30 pm

KALMARS



CANADA WHARF, ROTHERHITHE STREET, SE16

£1,000,000

1,800 Square foot penthouse apartment with river front views. Set within a converted warehouse, this apartment sits inside an impressive 19th century wharf and has been finished to a very high standard, accentuating the property's industrial heritage. The property consists of three double bedrooms, an open plan kitchen/reception room, two en-suite bathrooms, a main bathroom and a private balcony.



HOP STUDIOS, JAMAICA ROAD, SE1

£1,400,000

This must see two-bedroom apartment is situated inside a converted warehouse that has been finished to the highest possible specification. Built in 1887, this former warehouse is full of character, retaining interesting features from its industrial heritage. The sophisticated luxury interior, designed by Design House Liberty, offers the best in 'loft' style living, and is just a short walk from Tower Bridge.

2 Shad Thames, SE1 2YU

020 7403 0600

www.kalmars.com



WHAT'S YOUR PROPERTY worth?

With interest rates due to rise, when is the best time to sell?

by **George Swinton**

Have you ever wondered what your property is actually worth? Local property specialists KALMARS have given us some insight into current trends and provided us with price guides for home-owners in south London, based on property type and number of bedrooms.

“Owners of prime flats with one, two or three bedrooms can expect to sell their property for up to £550k, £750k and over £850k respectively,” explained Sebastian Kalmar at their office in Shad Thames.

“The demand for sellers is very strong at the moment,” he continued. “House prices have reflected this in their growth in the first and second quarters of 2015 and we expect demand in the next quarter of 2015 to be just as strong, if not stronger. So, if you are thinking of marketing your property, there's no better time, especially in regenerated areas like New Bermondsey, Surrey Quays and Elephant & Castle.”

“The shortage of supply is also increasing the demand for rented property, which in turn is increasing rental prices. One bedroom prime flats start at around £400 per week, whereas two and three bedroom properties are now looking for £500 and £750 respectively.”

The decision to sell your property may come down to the potential value of the property and that is where specialists like KALMARS can lend their expertise. Having recently sold properties such as the Balfour Lofts, the Valentine Apartments and Painters Mews, they also have extensive knowledge of upcoming projects in SE1 and SE16. These include New Bermondsey's Biscuit Factory, the Lendlease regeneration project of Elephant & Castle and the redevelopment of Surrey Quays and its shopping centre.

With prices as strong as they currently are, the big decision for home-owners now is whether to sell soon or wait, but having an accurate valuation may make the decision a lot easier.

KALMARS

Jamaica Wharf
2 Shad Thames
SE1 2YU

t: 020 7403 0600

w: www.kalmars.com

e: info@kalmars.com

The KALMARS Team



Balfour Lofts in County Street, Elephant & Castle





THE RISE OF rotherhithe

The gateway
to other worlds
by George Swinton

A view of the Canary Wharf from the open spaces of Rotherhithe

There are few places so close to the heart of London that enjoy spaces as quiet and open as Southwark Park, or as fascinating as the Stave Hill Ecology Park, a 5.2 acre nature reserve, educational facility, research area and place of recreation. Situated on the bend of the Thames, Rotherhithe has extensive river frontage on both its northern edge and to the east, too. Naturally, it enjoys a regular commuter ferry across to Canary Wharf as well as a service along the river all the way to Richmond in the west and the Thames Barrier in the east.

The river, though, is not the only way of getting around from Rotherhithe. With tube stations servicing Bermondsey, Rotherhithe, Canada Water and Surrey

Quays, as well as overground trains running north/south through Surrey Quays, Canada Water and Rotherhithe, the area is well-connected to say the least.

Thanks to the imminent redevelopment and upgrade of the retail and leisure complex at Surrey Quays, the next ten years is likely to see a big change in the area's popularity and property value, even though prices have already seen a sharp upward turn in the last decade. Rotherhithe has often been considered the more desolate, distant end of Bermondsey – the 'wrong side of the street' to Wapping and the urban edge to Greenwich – but now this space between other desirable areas is rising on the swell of demand as people are catching on to its benefits and relatively low prices.

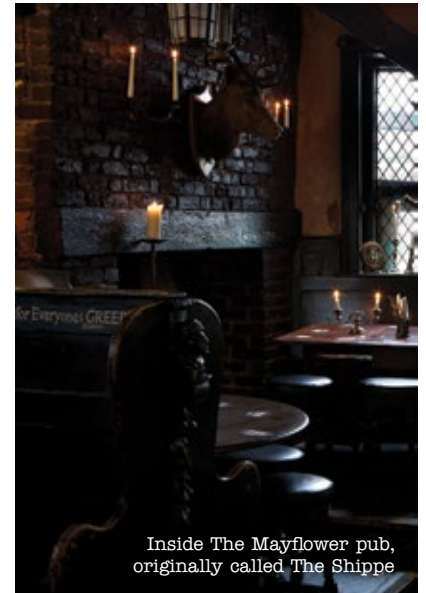
Rotherhithe's history is surprisingly rich and still



Stave Hill Ecology Park in Rotherhithe



The remains of Rotherhithe Palace on Bermondsey Wall East



Inside The Mayflower pub, originally called The Shippe

celebrated today, one example being the shopping centre's naval facade. For a thousand years it has been a natural port for London, gaining its name from *hryther + hyth*; the Anglo-Saxon for "landing-place for cattle". The first recorded use of this name was in 1105, as *Rederheia*. Perhaps the delivery point for farm animals transported from the Isle of Sheppey and the farms of Kent, it was the watery gateway for food and trade into the capital.

By 1350 King Edward III had a palace built on the marshy rivers edge, although it could have been considered more of a hunting lodge for his falcons and a place to stay away from the plague-ridden London populous than a palace of luxury. The remains of the palace can still be seen, modestly resting in an open grassy

square at the water's edge at Bermondsey Wall East.

Skip forward two or three hundred years to 1620, in front of the Mayflower pub (then called 'the Shippe'), and you would have seen The Mayflower set sail to Southampton, where it picked up 102 English Separatist passengers and headed off to the New World, where they would become known as America's founding 'Pilgrim Fathers'. From these original travellers have come some surprising and hugely influential descendants including Presidents Franklin D Roosevelt, George W. Bush and John Adams as well as entertainers Bing Crosby, Clint Eastwood, Richard Gere, Orson Wells and Marilyn Monroe.

More recently the docks at Surrey Quays and the tunnel to Wapping built under the Thames by the Isambard Brunel father and son team have carved Rotherhithe out as a port and hub central to London's, and the country's, industrial revolution. It remained this way until the outbreak of the war when on the first day of the Blitz, Surrey Quays was heavily bombed, the raid igniting over a million tonnes of timber in Quebec Yard, causing the most intense single fire ever seen in Britain.

It seems a long time to remain dormant but Rotherhithe's history is huge and the seventy years that have passed since have not weakened it for the long term. Now, from these ashes, like a mythical Phoenix, Rotherhithe is rising to be glorious again.

“The Mayflower picked up 102 English Separatists and headed off to the New World”



The Pilgrim Fathers aboard the Mayflower

Morris Tyre Service

A family business with over 50 years of experience

- ✓ New Tyres
- ✓ Part Worn Tyres
- ✓ Wheel Alignment
- ✓ Puncture Repairs
- ✓ Alloy Wheels



'Honest, reliable and great price - thanks Danny!'

Ollie Clarke

'We always use Morris Tyres for all of our fleet cars because of their quick turnaround and excellent service.'

Keith Street, Logistics Director

72 Enid Street
Bermondsey SE16 3RA
020 7231 5857
020 7231 5899



CARLTON HOUSE, SE16 6SL - £799,950 SHARE OF FREEHOLD

This exceptionally spacious second and third floor (top) duplex apartment contains four double bedrooms and sits in a well-kept, purpose built development adjacent to the 'Albion Channel' and close to local amenities. Carlton House is a short walk away from the Surrey Quays shopping and leisure centres, with easy access to Canary Wharf and the West End via the Surrey Quays overground station and Canada Water tube station.



CHAMBERLAIN COURT, SE16 2AZ - £465,000 LEASEHOLD

This stylish second floor apartment is situated in a modern development, close to local amenities. Chamberlain Court is a short walk from Southwark Park and is close to major bus routes and rail stations. This property contains two double bedrooms, a spacious reception with a decked covered terrace, a quality fitted kitchen, a thermostatically controlled heating system and entry system.



TROTHY ROAD, SE1 5RR - £560,000 FREEHOLD

A well maintained, two-storey linked terraced house in a quiet no through road, close to all local amenities. The property is situated close to 'The Blue' Shopping Parade and a short distance from Bermondsey tube station. Trothy Road includes three bedrooms, a spacious reception/dining room with laminate wood flooring, a large rear garden and a front patio.



DOLPHIN CLOSE, SE16 6DX - £775,000 FREEHOLD

A two-storey, extended semi-detached house refurbished to a very high standard throughout positioned in this small secluded cul-de-sac, close to Canada Water tube station and Rotherhithe overground station. Dolphin Close includes a quality fitted kitchen, a luxury bathroom suite and ground floor shower room, a paved rear garden and three double bedrooms.

SURREY QUAYS | 020 7237 9119
surreyquays@winkworth.co.uk

winkworth.co.uk
on the go...

No matter where you are, our
properties are only a tap away.



FIELD & SONS

Surveyors, Valuers & Estate Agents
EST. 1804

Surrey Square, Southwark, SE17

Rarely available to the market, this Grade II Listed Georgian building dates from the 1840's and extends to over 2,800 square feet, incorporating self contained lower ground & top floor apartments within one freehold. Ideal for those wanting separate accommodation for guests within the same home. Wonderful period features include open fireplaces & sash windows with fabulous natural light and a charming rear garden.

EPC Rating: D

£1,895,000 Freehold

Webber Street, Southwark, SE1



This smart, three double-bedroom duplex penthouse apartment lies on the upper two floors of a private development of only eight apartments, ideally located for the Southbank, Waterloo station and Southwark tube station. The apartment extends to over 1,050 square feet, has a quality design and high specification. The 'wrap around' terrace has fabulous views east & west across to the Shard, the City and beyond. EPC Rating: B

£1,200,000 Leasehold

Portland Court, Trinity Street, SE1



This spacious, two double bedroom apartment is located on the ground floor of the ever popular Chadwick Square development just off of Trinity Street. The property extends to 770 square feet internally and has a good sized terrace from the reception area overlooking communal gardens. Portland Court is located within 5 minutes walk of Borough Tube station. EPC Rating: B

£745,000 Leasehold

FIELD & SONS

Established in Southwark 1804

54 Borough High Street
SE1 1XL

020 7407 1375

www.fieldandsons.co.uk



America House, Keppel Row, SE1

This fabulous 3 double-bedroom duplex apartment sits within an exclusive, private development, ideally located for the Southbank, Tate Modern and Borough Market. A modern property that extends to 1,475 square feet of internal accommodation and enjoys southerly views from the open plan main reception room. The property has a light and spacious interior, with a quality design, high specification and is in immaculate condition throughout.

£1,575,000 Leasehold

John Ruskin Street, Camberwell, SE5



A beautiful Victorian four bedroom house within a delightful residential street. This charming period house is arranged over three floors and extends to over 1,600 square feet. The property has a wealth of period features and a delightful, landscaped garden with a charming water feature. A rare family home in excellent condition.

£1,095,000 Freehold

Lant Street, Southwark, SE1



A modern one bedroom apartment for sale in The Rise, Lant Street. This stylish and modern fifth floor apartment is in a superb location ideally located for Borough Tube Station, London Bridge and Borough Market. The apartment has a well planned interior with good views of St Paul's and the City of London skyline from the balcony.

£550,000 Leasehold

For an appointment to view
please call Field & Sons sales office on

020 7407 1375

WILLIAMS LYNCH

PROPERTY CONSULTANTS



SE1 SPECIALISTS SINCE 1998
SALES, LETTINGS & PROPERTY MANAGEMENT

020 7940 9940

www.williamslynch.co.uk

info@williamslynch.co.uk

63 Bermondsey Street, London, SE1 3XF